

TRUNK SEWER INTERSECTION TIES

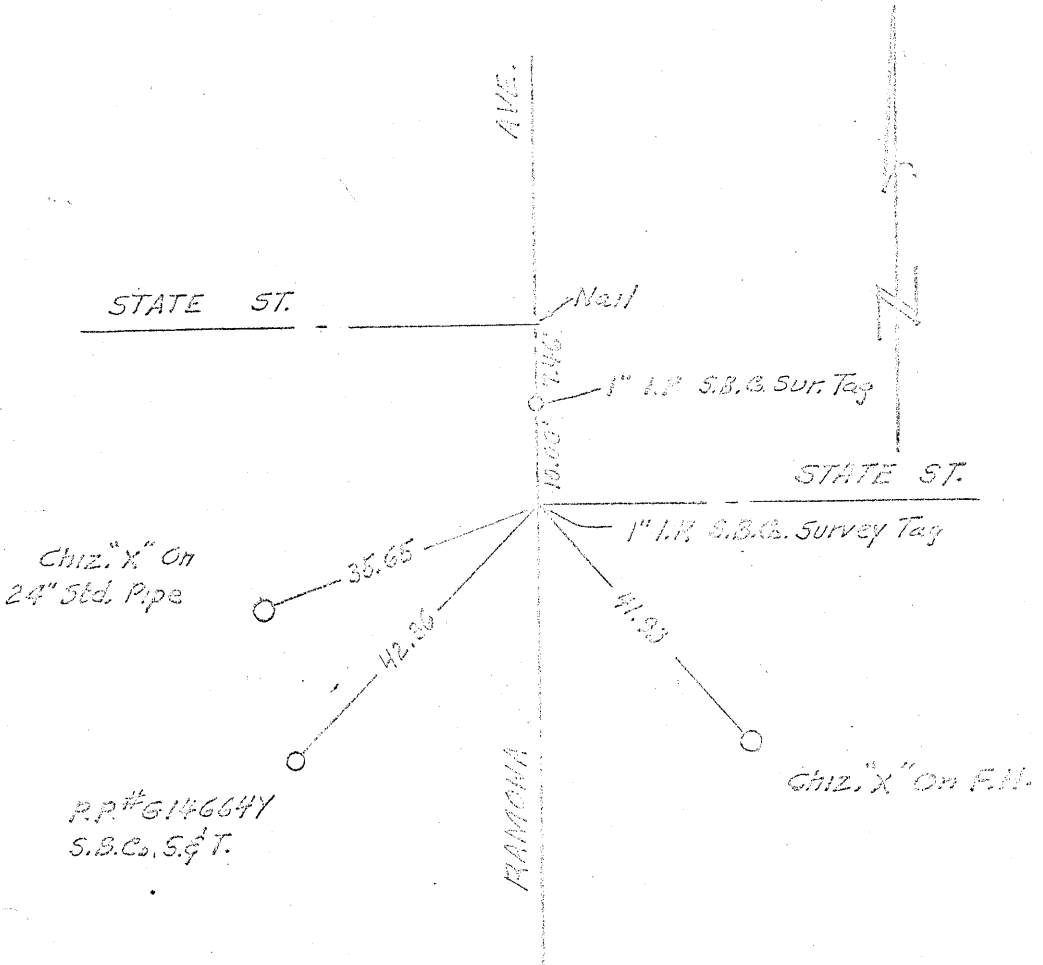
RAMONA AVENUE

and

STATE STREET

CITY OF MONTECLAIR

OCTOBER 1962



CHIZ. "X" On
24" Std. Pipe

P.P.#614664Y
S.B.C. S. & T.

CHIZ. "X" On F.H.

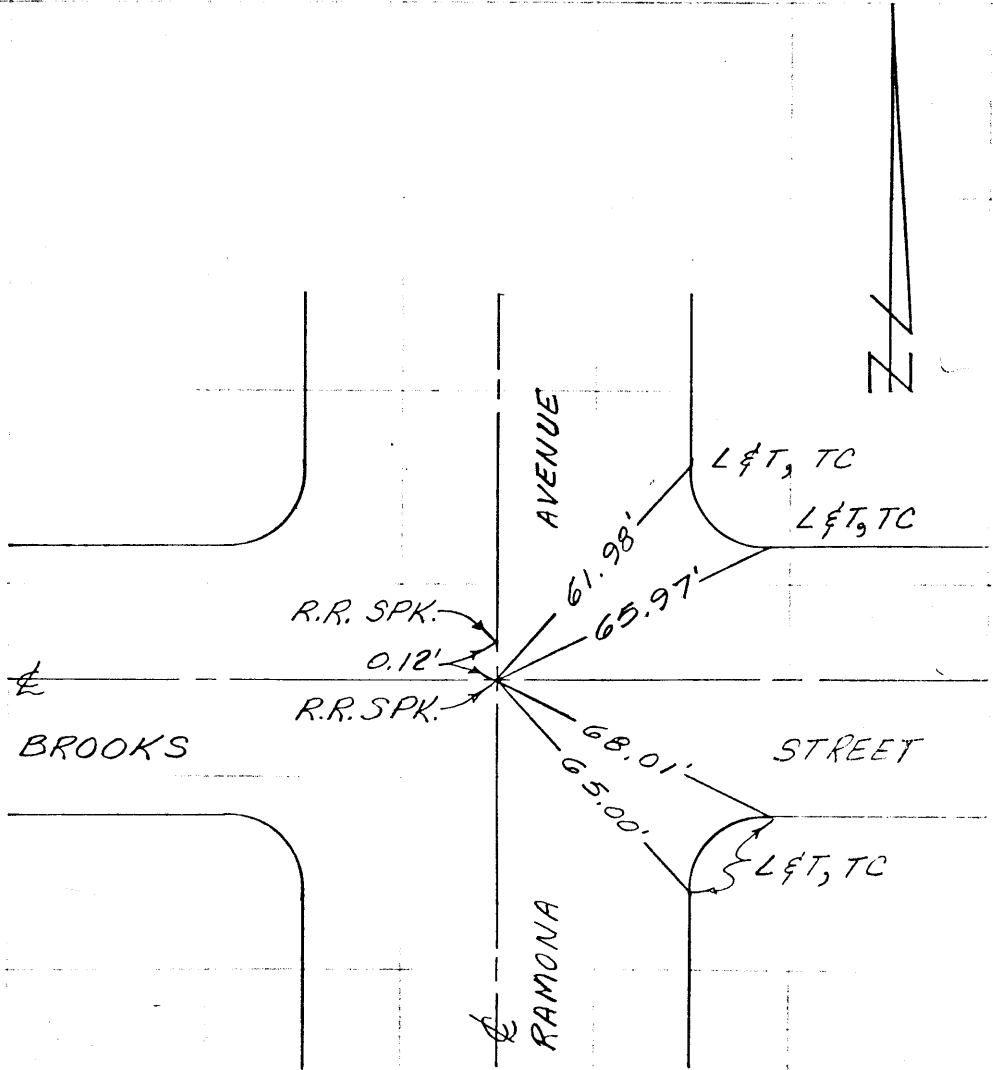
SURVEY OF _____

SURVEY BY _____

TR. No. **93A**

DATE _____

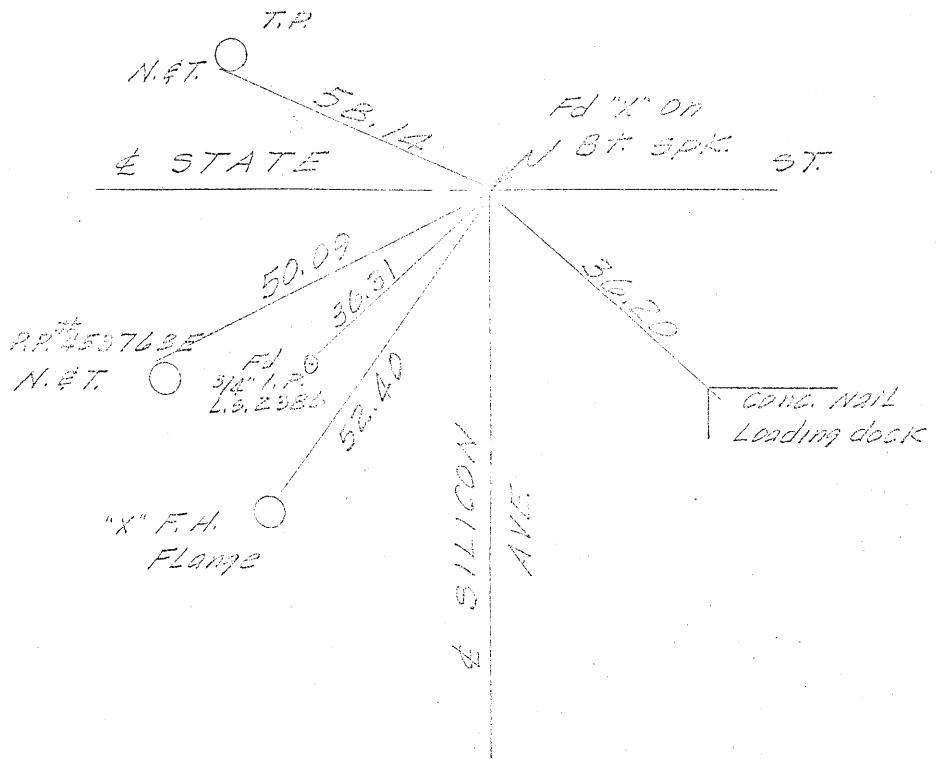
SO. CALIF. BLUE PRINT CO. -



RAMONA AVE. & BROOKS ST.

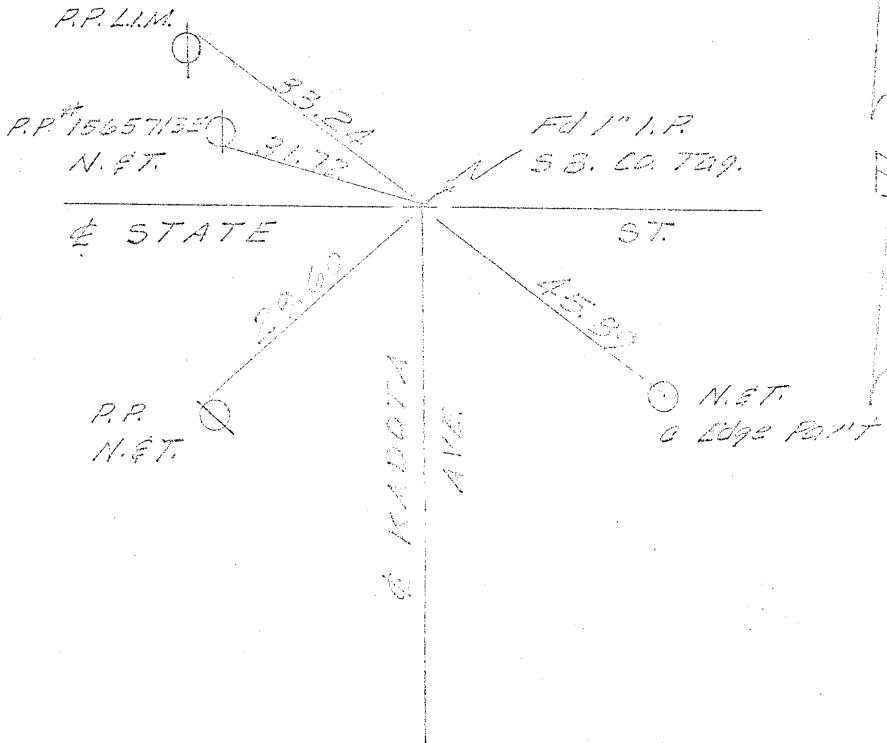
RETIED 10-18-72

SILICON AVE STATE ST.



Fd Bt Spk.
Sawyer Dist. No. 2
JULY, 1964

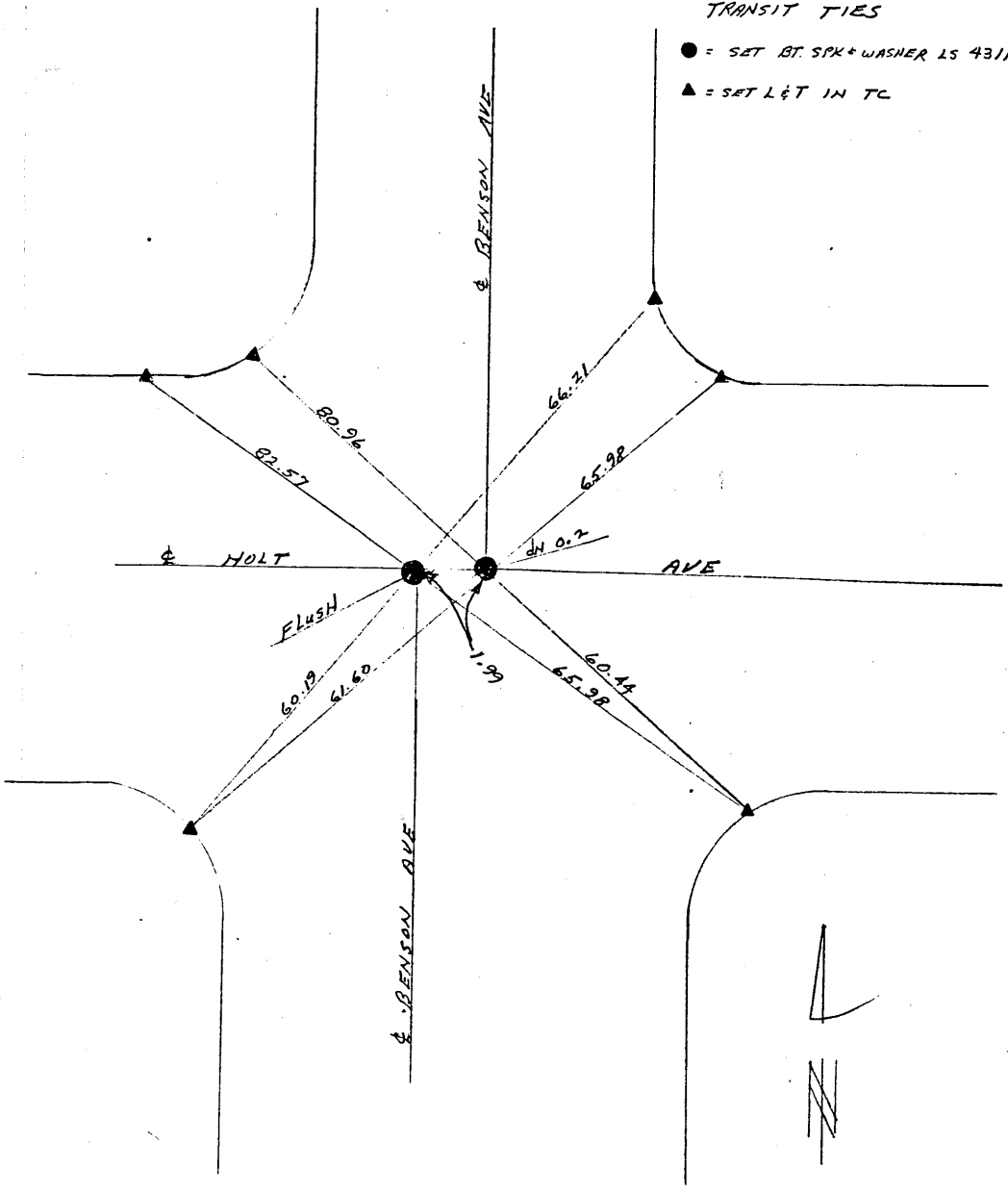
KADOTA AVE. STATE ST.



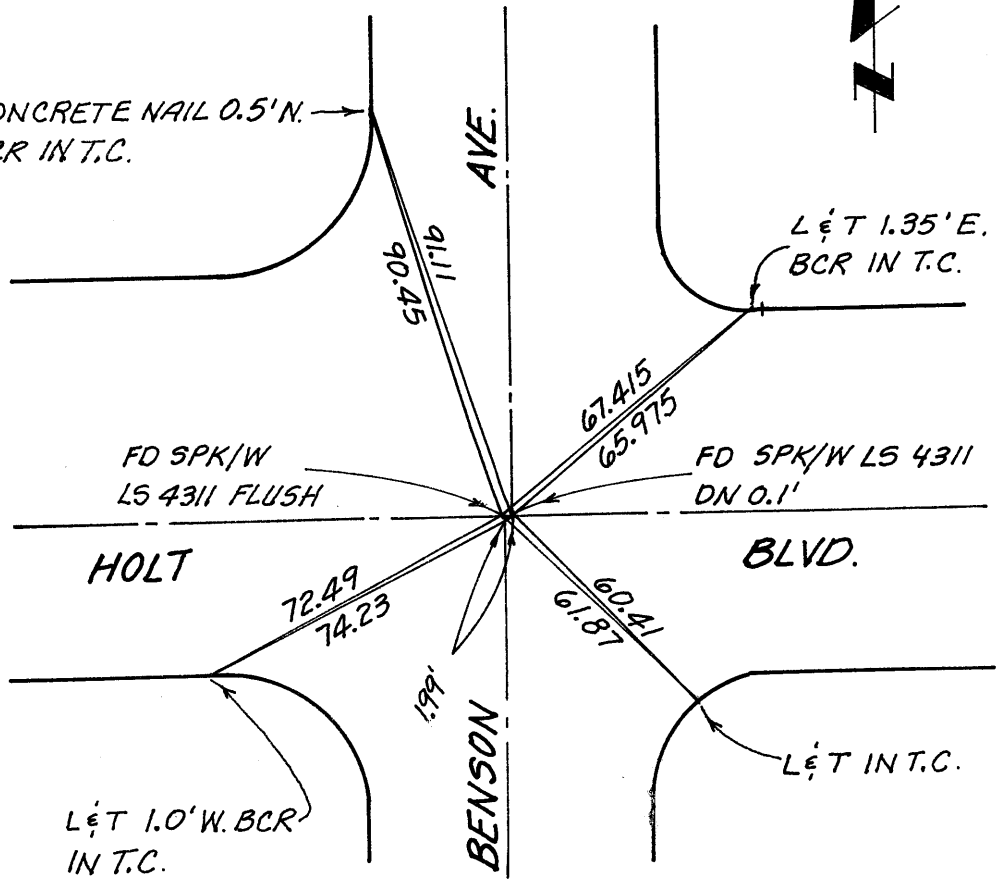
Fd 1" 58. CO. T29.
JULY, 1966
SEWER DIST NO. 2

TRANSIT TIES

- = SET BT. SPK + WASHER LS 4311
- ▲ = SET L&T IN TC



CONCRETE NAIL 0.5' N.
BCR IN T.C.



HOLT BLVD & BENSON AVE.

ANDREASEN ENGR. INC.
R.C.E. 8205
AUGUST 1999