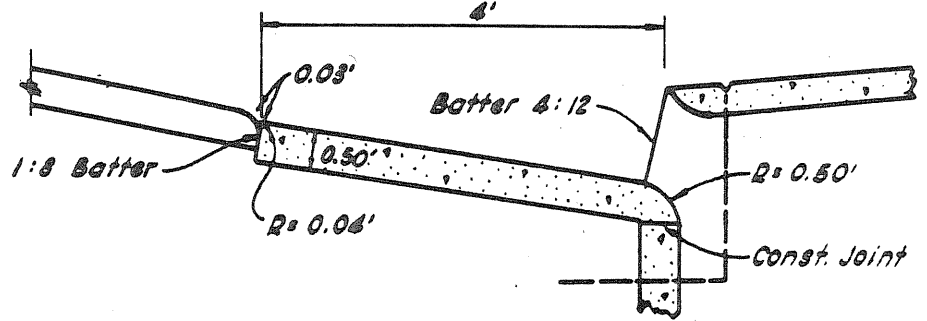
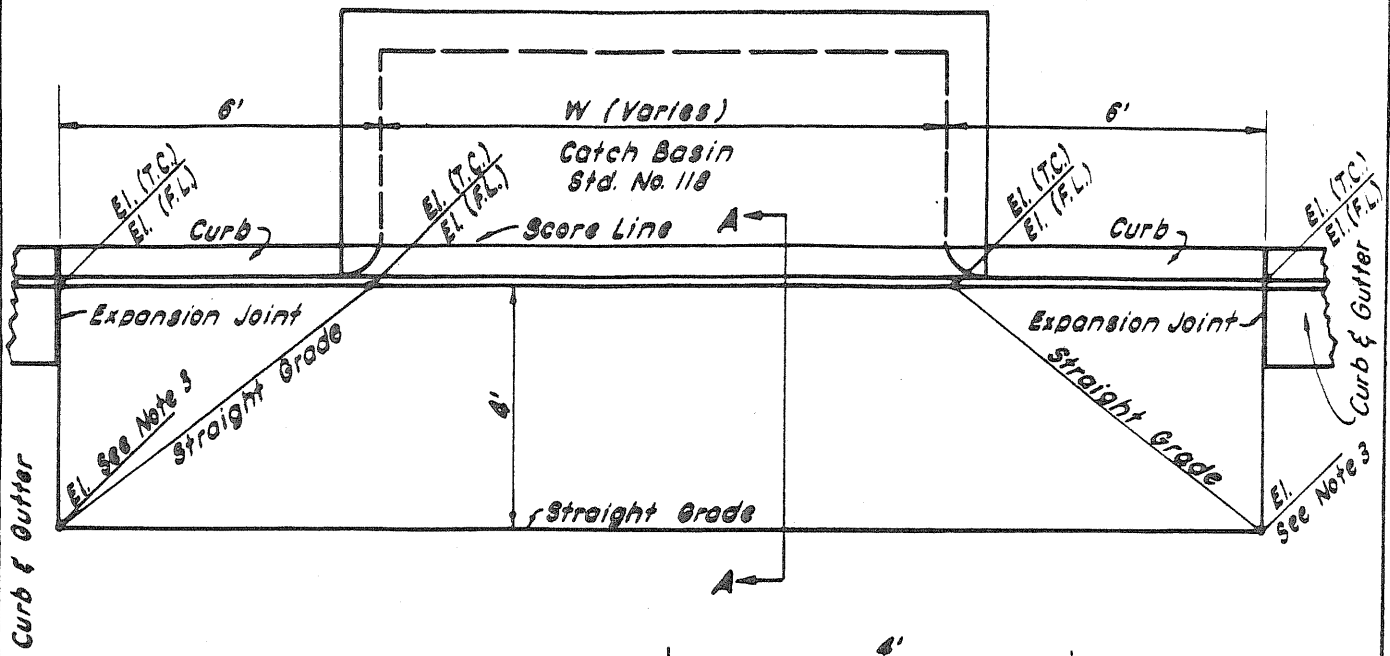


PLAN



SECTION A-A

Notes:

1. Class 360-C-3250 P.C.C. shall be used unless otherwise specified.
2. All necessary control elevations shall be shown on the construction plans.
3. Toe of Local El's shall conform to Street section.

CITY OF MONTCLAIR

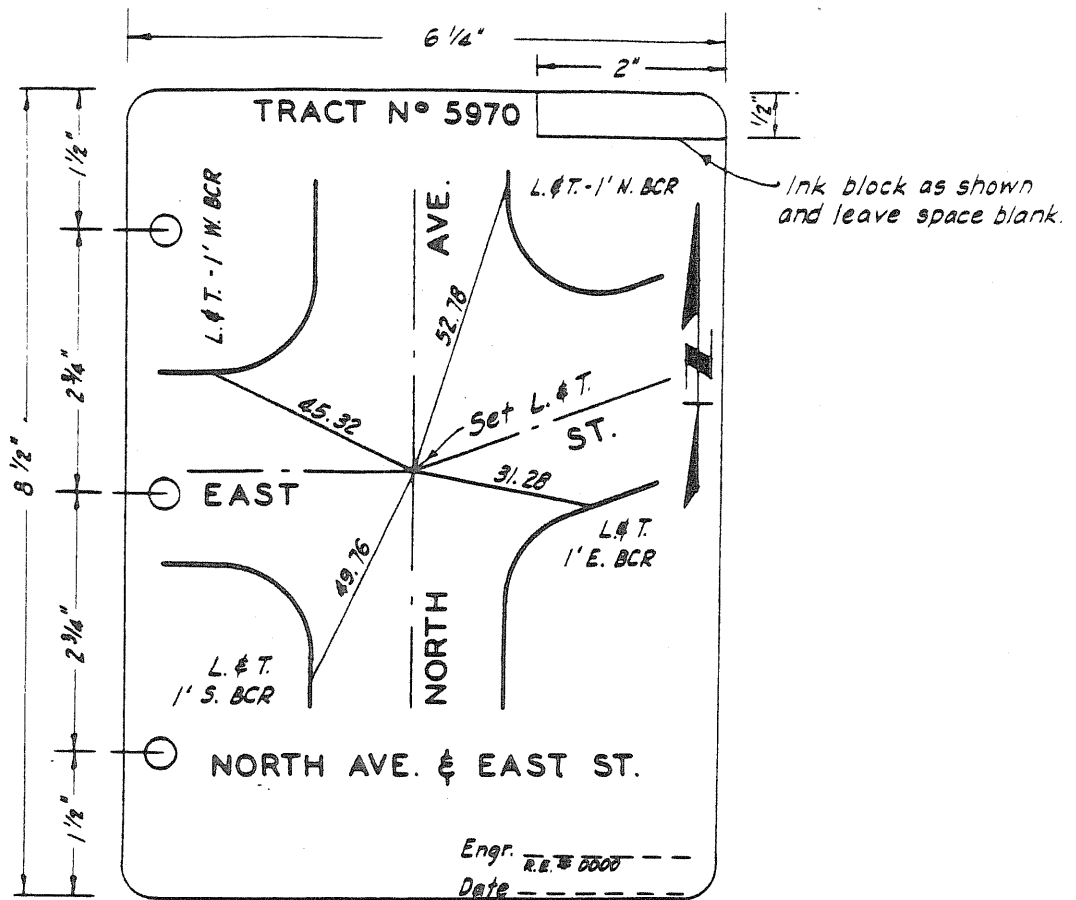
LOCAL DEPRESSION  
TYPE II

DRAWN BY \_\_\_\_\_ CHECKED \_\_\_\_\_

D.G.

DATE

*Bald Swartzell* 8-31-87  
CITY ENGINEER R.C.E. 20717



1/2 ACTUAL SIZE

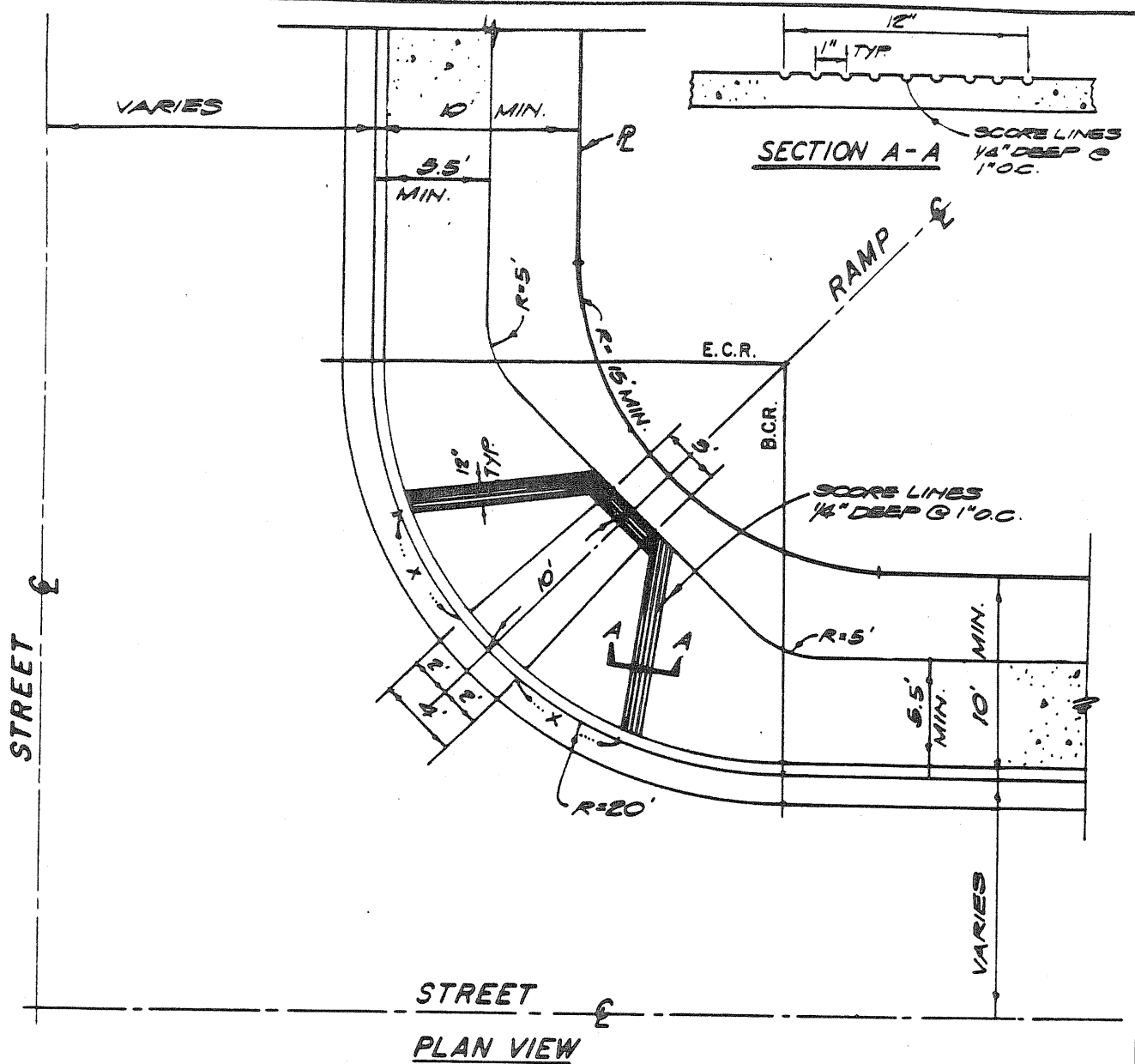
**Notes:**

1. Reference points shall be L. & T. s in sidewalks or in tangent portion of the curb and a minimum of 3 reference points for each intersection.
2. Center line monuments shall be:
  - a. Cement Concrete - Lead & Tack.
  - b. Macadam or Plant Mix - 6" R.R. spike.
  - c. Oil & Rock, Gravelled & other - 1" I.P. 12" down.
  - d. Where Manholes exist - 4 punch marks on M.H. ring.
3. Tangent Ties and Points on  $\pm$  Prods. are preferred.
4. Only one street intersection shall be shown on each sheet.
5. Sheets shall be of the size shown and shall be Lietz No. 987-10 Topflight or of equal quality tracing paper.

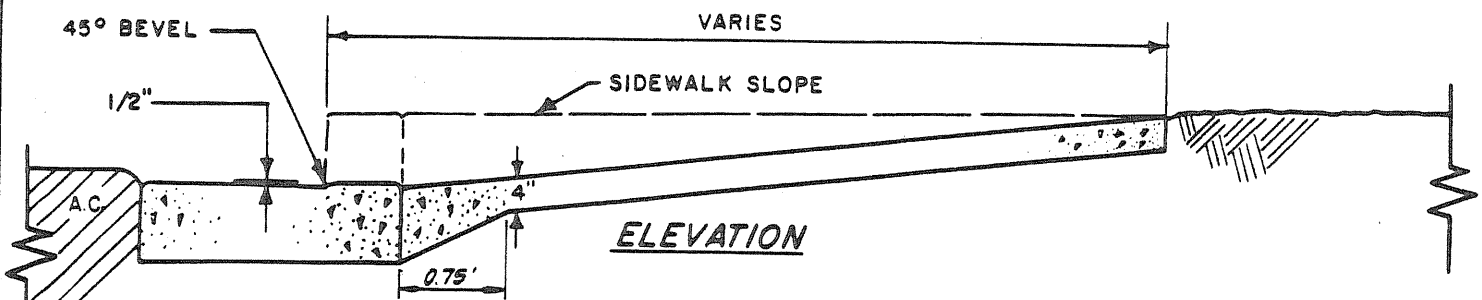
**CITY OF MONTCLAIR**

**CENTER LINE TIE NOTES**

DRAWN BY <u>G.E.R.</u>	CKD. BY <u>D.G.</u>	APPROVED BY <u>Carl Smith</u>	DATE <u>8-31-87</u>
CITY ENGINEER R.C.E. 20717			



STREET  
PLAN VIEW



ELEVATION

**NOTES:**

1. FOR CURB FACE OF 6" AND GREATER; X = 0'.
2. FOR CURB FACE OF 4" TO 6"; X VARIES 4' TO 6'.
3. FOR CURB FACE LESS THAN 4"; X = 4'.
4. RAMP SHALL HAVE A HEAVY BROOM FINISH.
5. CLASS 520-C-2500 P.C.C. SHALL BE USED UNLESS OTHERWISE SPECIFIED.

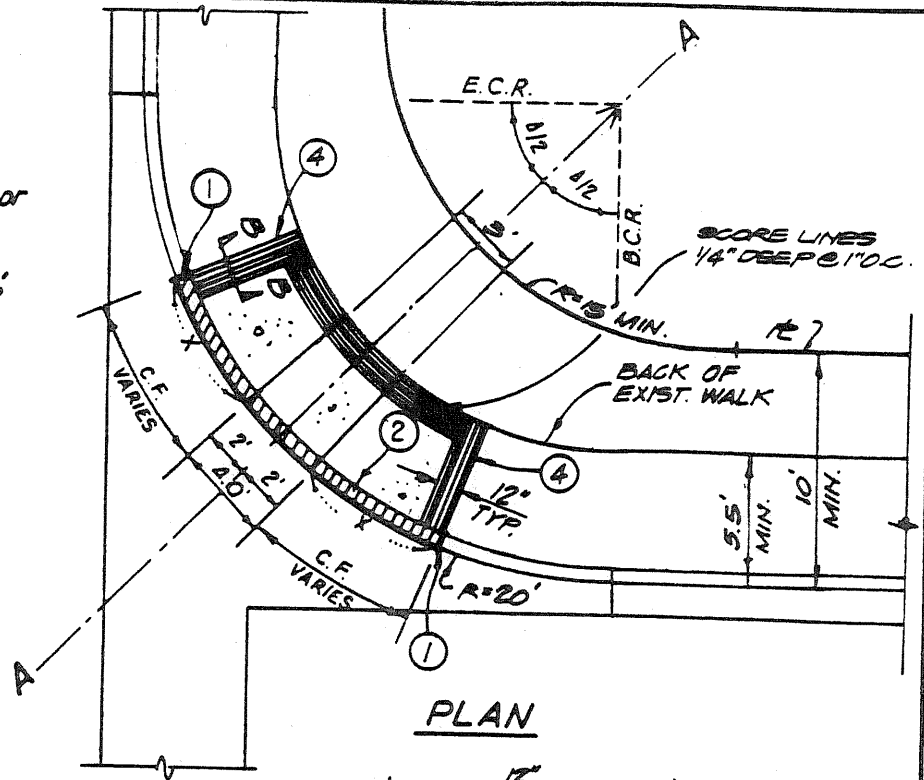
NO SCALE

<b>CITY OF MONTCLAIR</b>			
<b>WHEELCHAIR RAMP</b>			
DWG BY	CKD BY	APPROVED BY	Date
M.A.	D.G.	<i>Ed Santell</i>	8-31-87
CITY ENG R.C.E 20917			

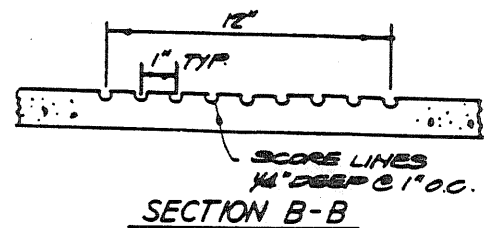
STD. NO 123

**NOTES:**

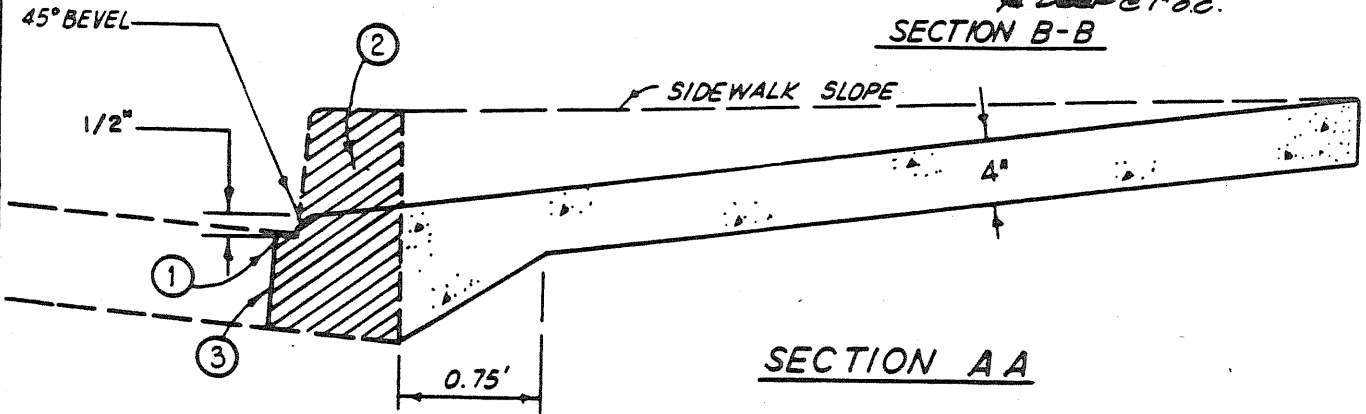
1. For curb face of 6" or greater,  $X = 6'$
2. 4" to 6";  $X$  varies 4' to 6'  
Less than 4",  $X = 4'$
3. Ramp shall have a heavy broom finish.



**PLAN**



**SECTION B-B**



**SECTION A A**

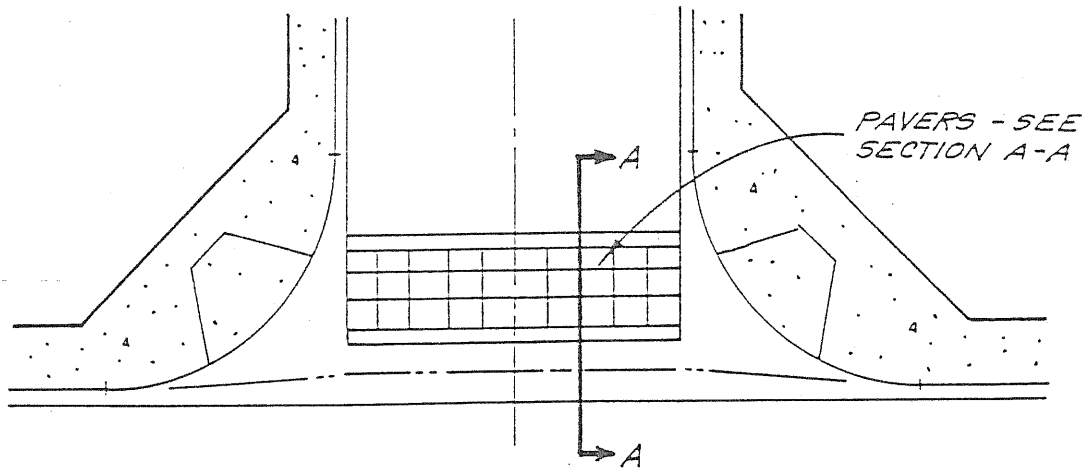
**CONSTRUCTION NOTES:**

- ① - Saw-cut a minimum of 6" depth before breaking off curb portion.
- ② - Remove existing curb shown cross-hatched and existing sidewalk.
- ③ - Thoroughly clean with wire brush and apply Hunt 101 Epoxy Resin Bond or approved equal to Manufacturer's recommendations and to satisfaction of the City Engineer.
- ④ - Limit of sidewalk removal.
- ⑤ - Class 520-C-2500 P.C.C. shall be used unless otherwise specified.

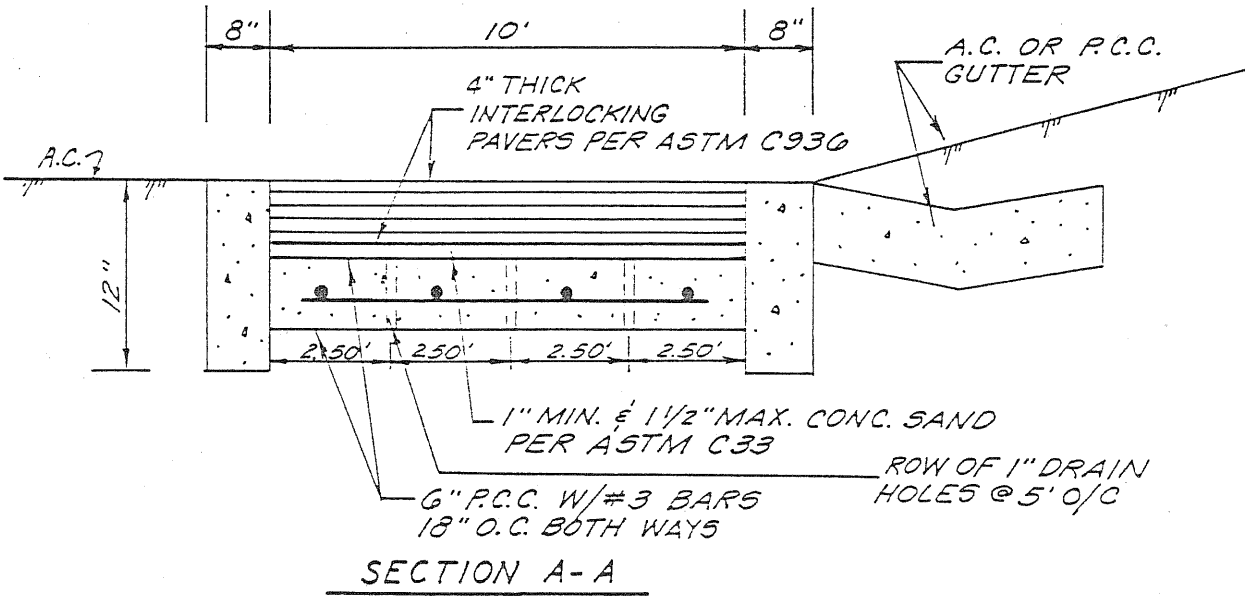
**CITY OF MONTCLAIR**

**WHEEL CHAIR RAMP  
AT EXISTING CURB RETURN**

DRAWN: G.E.R.	CHECKED: D.G.	APPROVED BY: <i>Paul Santell</i> CITY ENGINEER R.C.E. 20717	DATE 8-31-87
------------------	------------------	---	-----------------



PAVERS - SEE SECTION A-A



SECTION A-A

NOTES

1. THE LOCATION OF THE PAVER CROSSWALK IS TO BE APPROVED BY THE CITY ENGINEER.
2. THE PAVER PATTERN AND COLORS ARE TO BE APPROVED BY THE CITY ENGINEER

CITY OF MONTCLAIR			
INTERSECTION PAVERS			
DWN. BY J.H.	CKD BY _____	APPROVED BY <i>Carl J. Ben III</i>	DATE 10/25/91

REVISED 3-5-92